

Structured Electronic Design

Operational Amplifiers: types

Operational amplifiers

Operational amplifiers

Universal building block for analog computers:

<http://www.analogmuseum.org/>

Operational amplifiers

Universal building block for analog computers:

<http://www.analogmuseum.org/>

Analog computing:

- addition
- subtraction
- multiplication (gain)
- integration
- differentiation
- absolute value

Operational amplifiers

Universal building block for analog computers:

<http://www.analogmuseum.org/>

1952: First commercially
available OpAmp

George A. Philbrick: K2-W

Analog computing:

- addition
- subtraction
- multiplication (gain)
- integration
- differentiation
- absolute value



Operational amplifiers

Universal building block for analog computers:

<http://www.analogmuseum.org/>

1952: First commercially available OpAmp

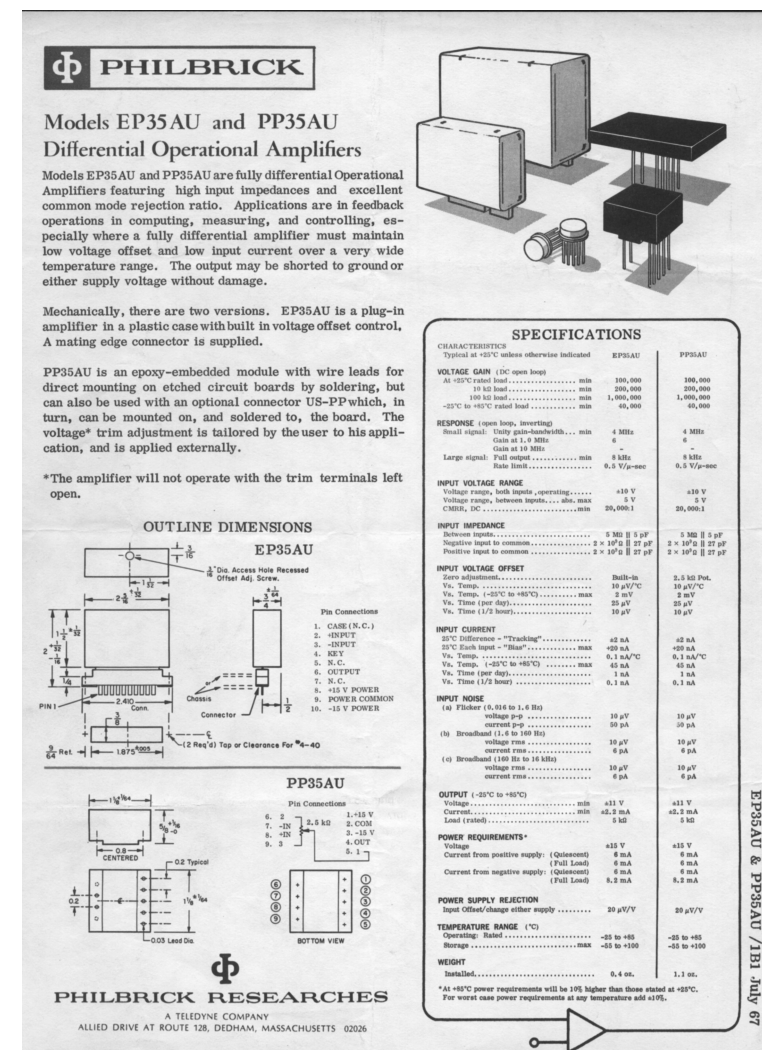
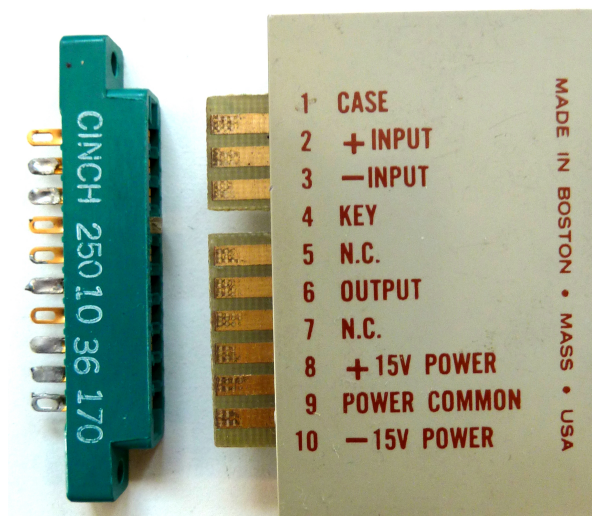
George A. Philbrick: K2-W

Analog computing:

- addition
- subtraction
- multiplication (gain)
- integration
- differentiation
- absolute value



1967: Philbrick: EP35AU



Operational amplifiers

Universal building block for analog computers:

<http://www.analogmuseum.org/>

1952: First commercially available OpAmp

George A. Philbrick: K2-W

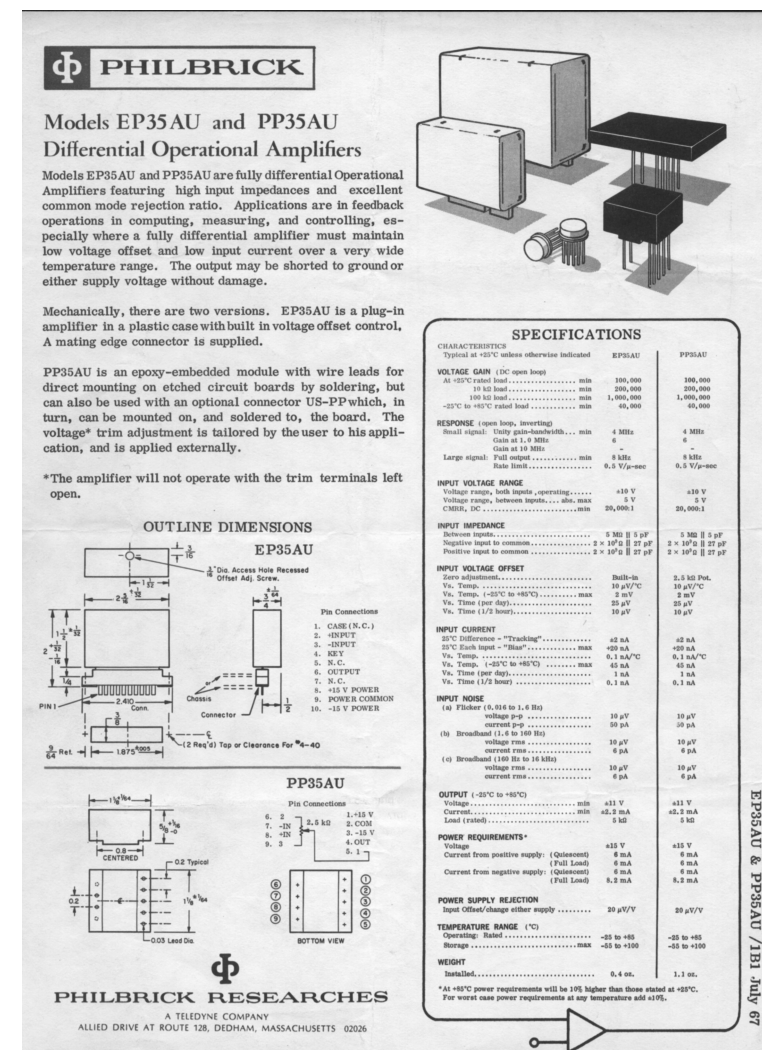
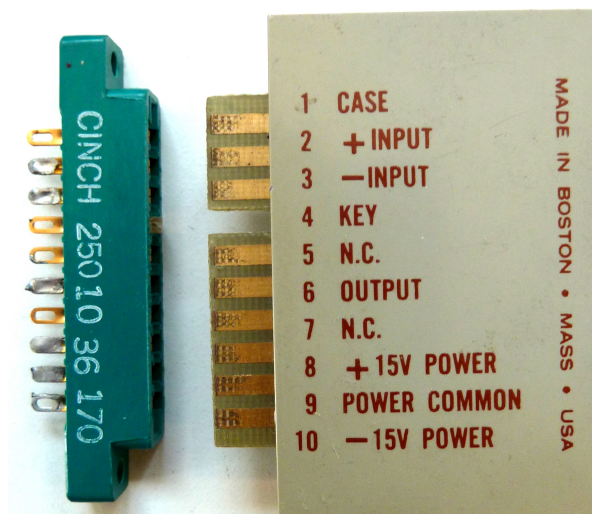


Analog computing:

- addition
- subtraction
- multiplication (gain)
- integration
- differentiation
- absolute value

1964: First IC: UA702 Bob Widlar, Fairchild

1967: Philbrick: EP35AU



Operational amplifiers

Universal building block for analog computers:

<http://www.analogmuseum.org/>

Analog computing:

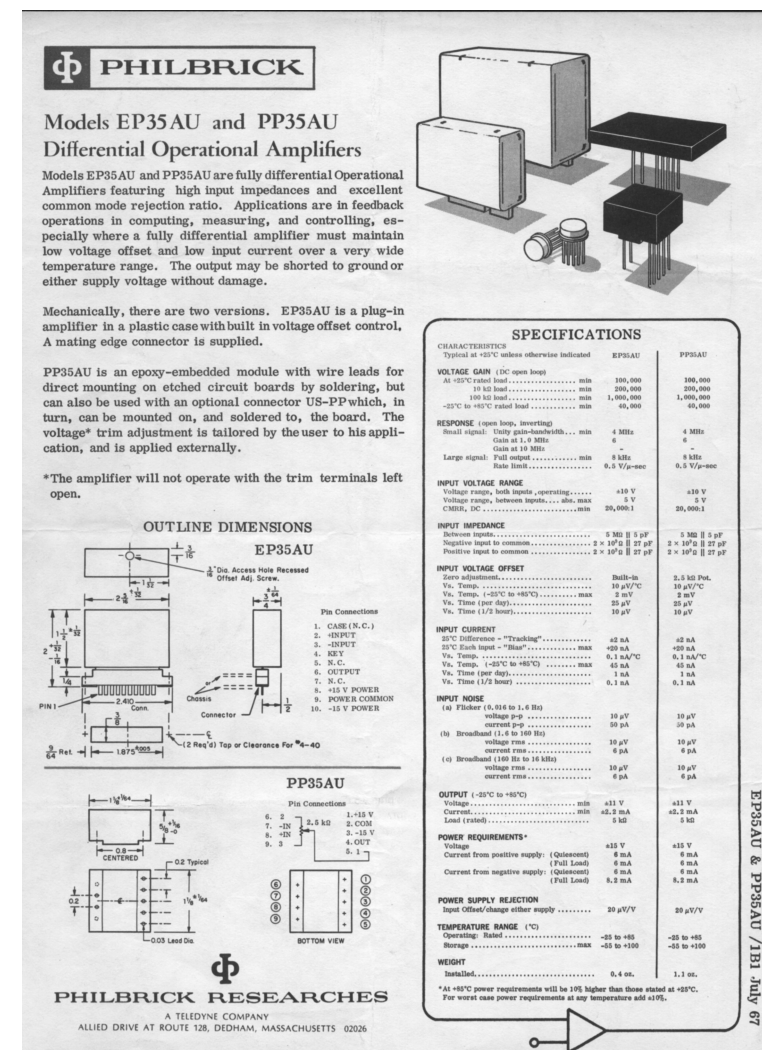
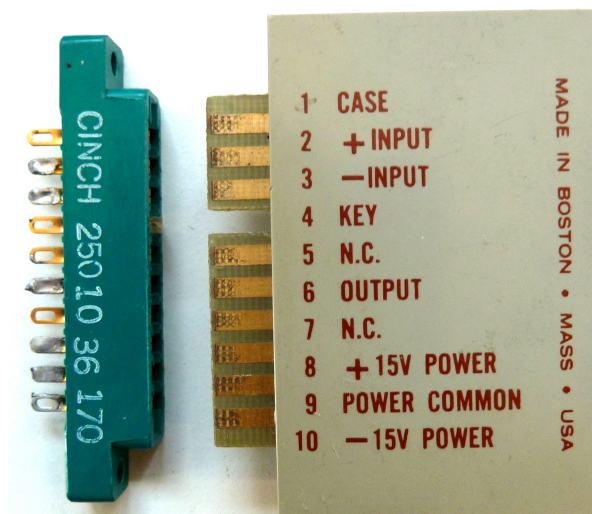
- addition
- subtraction
- multiplication (gain)
- integration
- differentiation
- absolute value

1952: First commercially available OpAmp

George A. Philbrick: K2-W



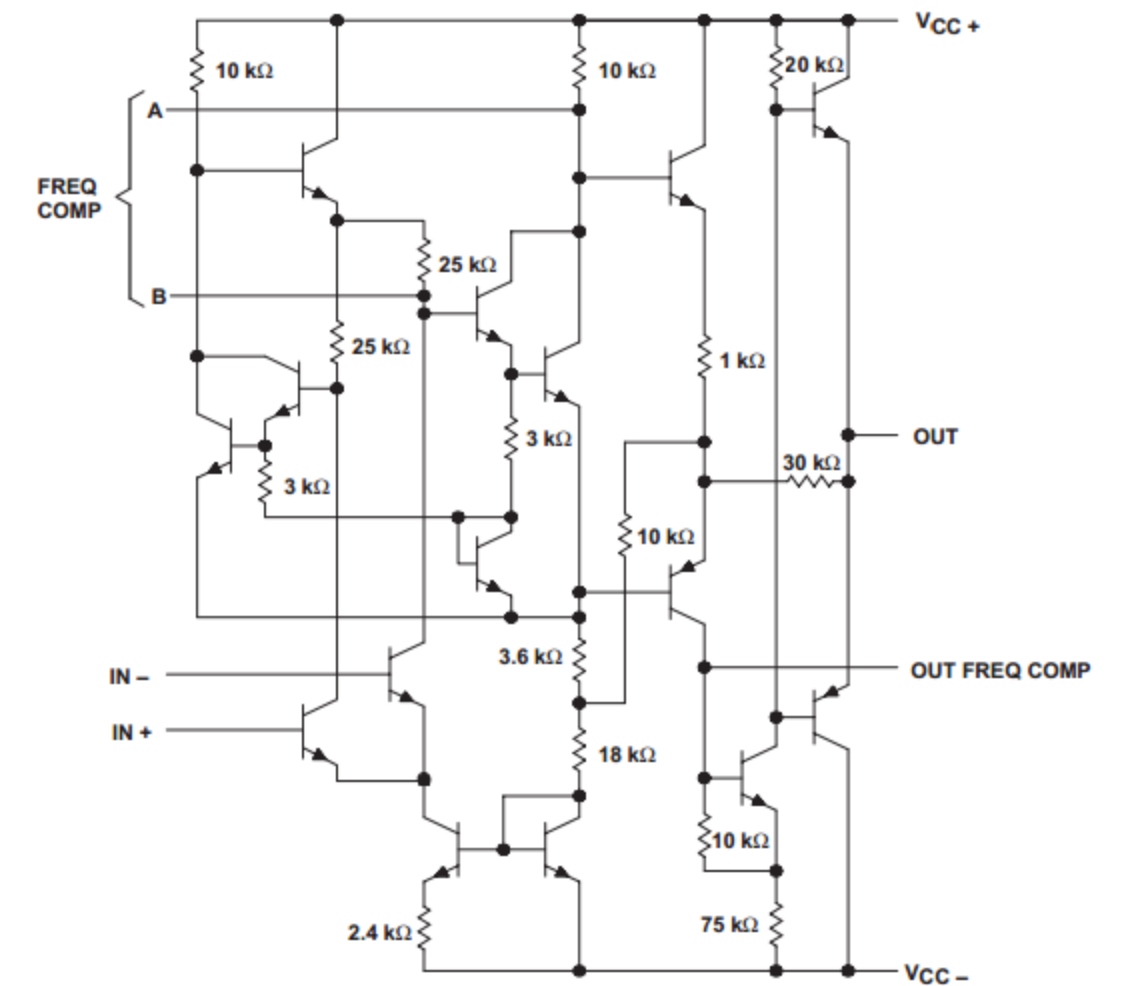
1967: Philbrick: EP35AU



1964: First IC: UA702 Bob Widlar, Fairchild

1965: Commercial success:

UA709 Bob Widlar, Fairchild



Operational amplifiers

Universal building block for analog computers:

<http://www.analogmuseum.org/>

1952: First commercially available OpAmp

George A. Philbrick: K2-W

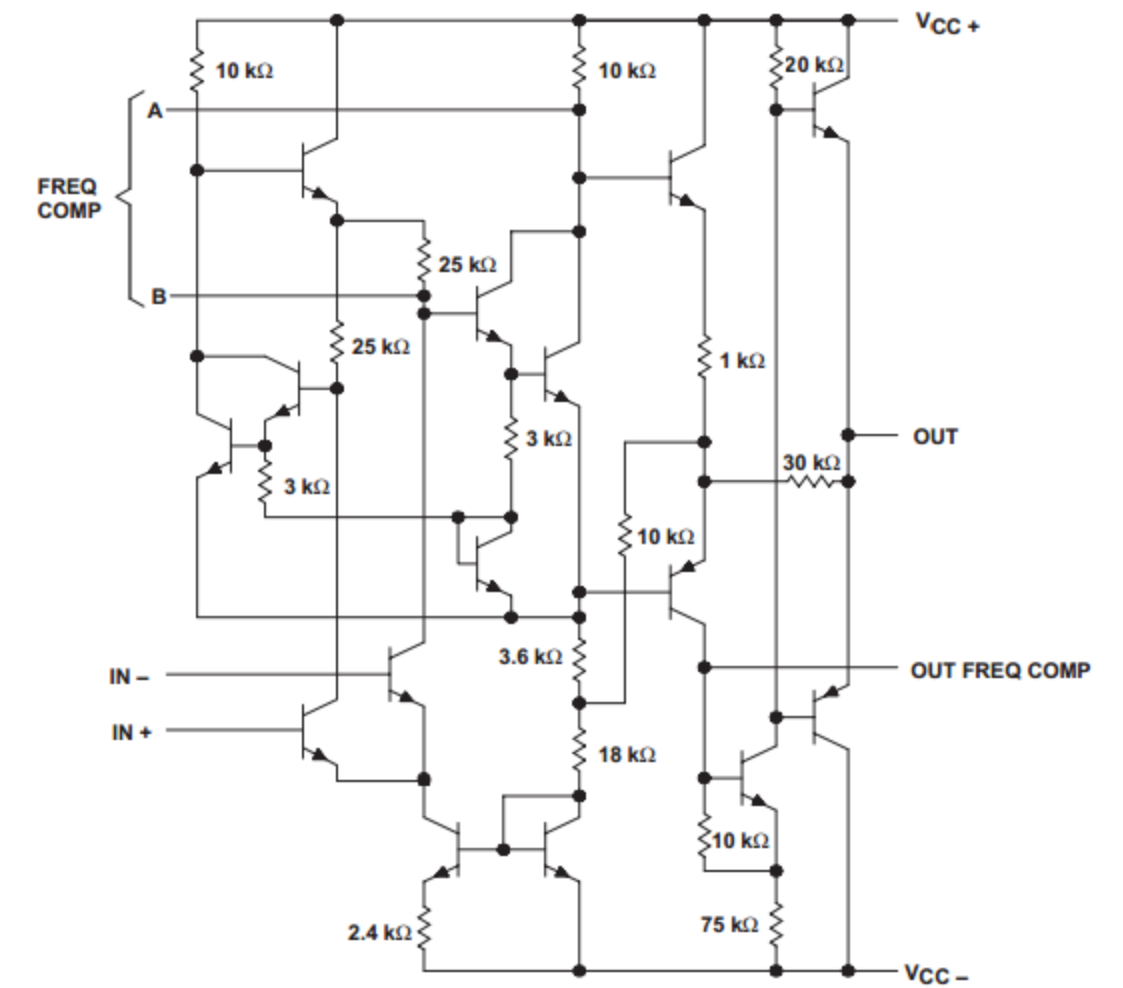
Analog computing:

- addition
- subtraction
- multiplication (gain)
- integration
- differentiation
- absolute value

1964: First IC: **UA702** Bob Widlar, Fairchild

1965: Commercial success:

UA709 Bob Widlar, Fairchild



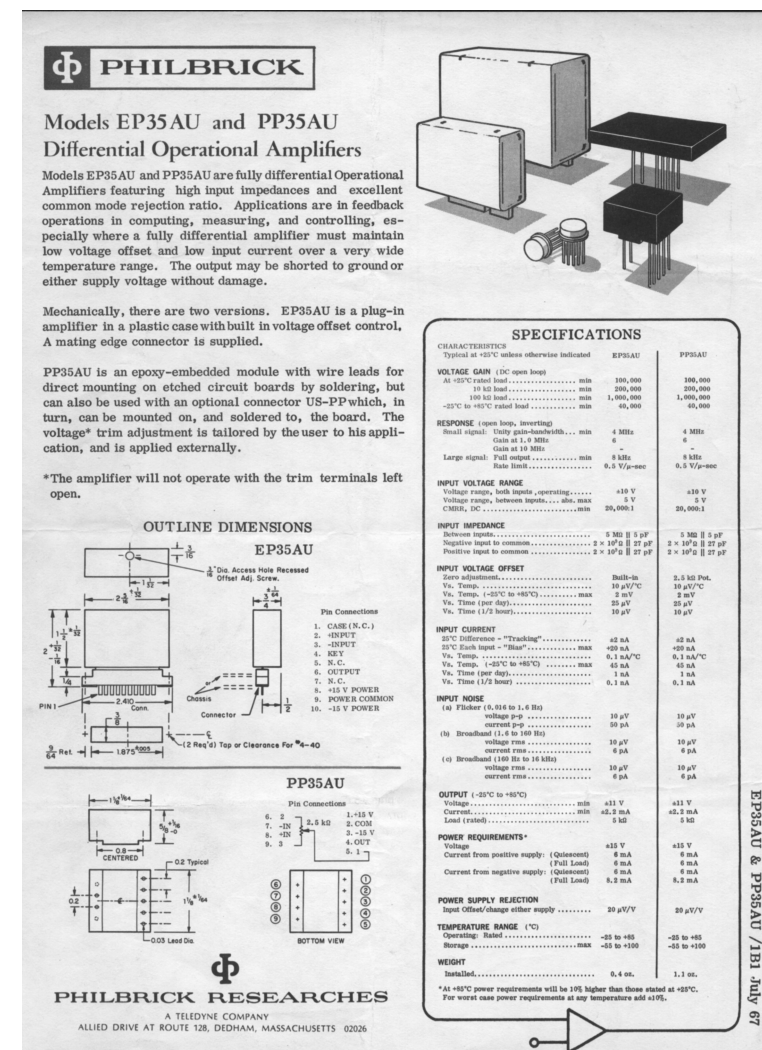
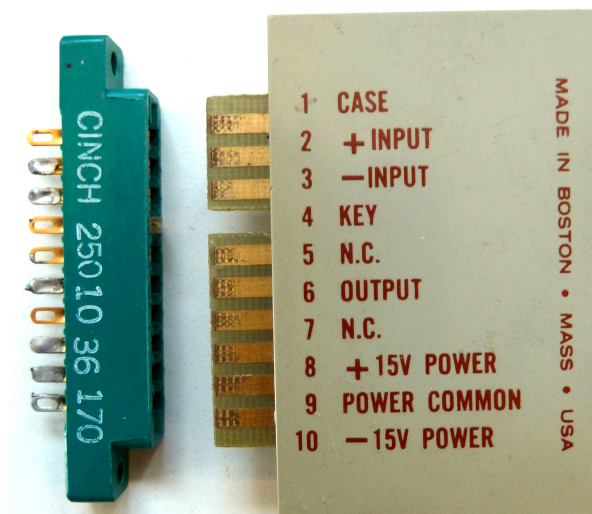
Nowadays:

Just have a look at:

- Analog Devices: Operational Amplifiers
- Texas Instruments: Operational Amplifiers



1967: Philbrick: EP35AU



Operational amplifiers

Universal building block for analog computers:

<http://www.analogmuseum.org/>

1952: First commercially available OpAmp

George A. Philbrick: K2-W

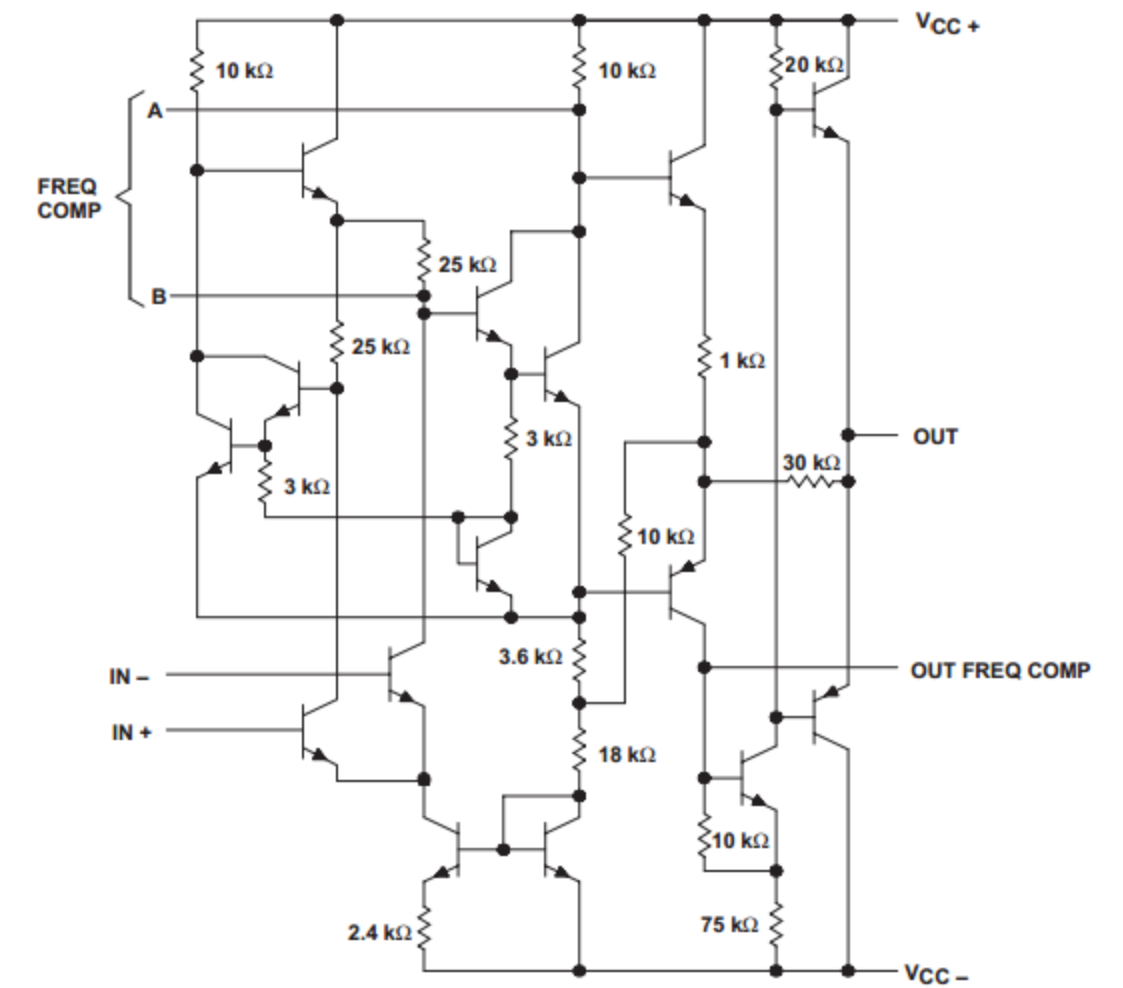
Analog computing:

- addition
- subtraction
- multiplication (gain)
- integration
- differentiation
- absolute value

1964: First IC: UA702 Bob Widlar, Fairchild

1965: Commercial success:

UA709 Bob Widlar, Fairchild



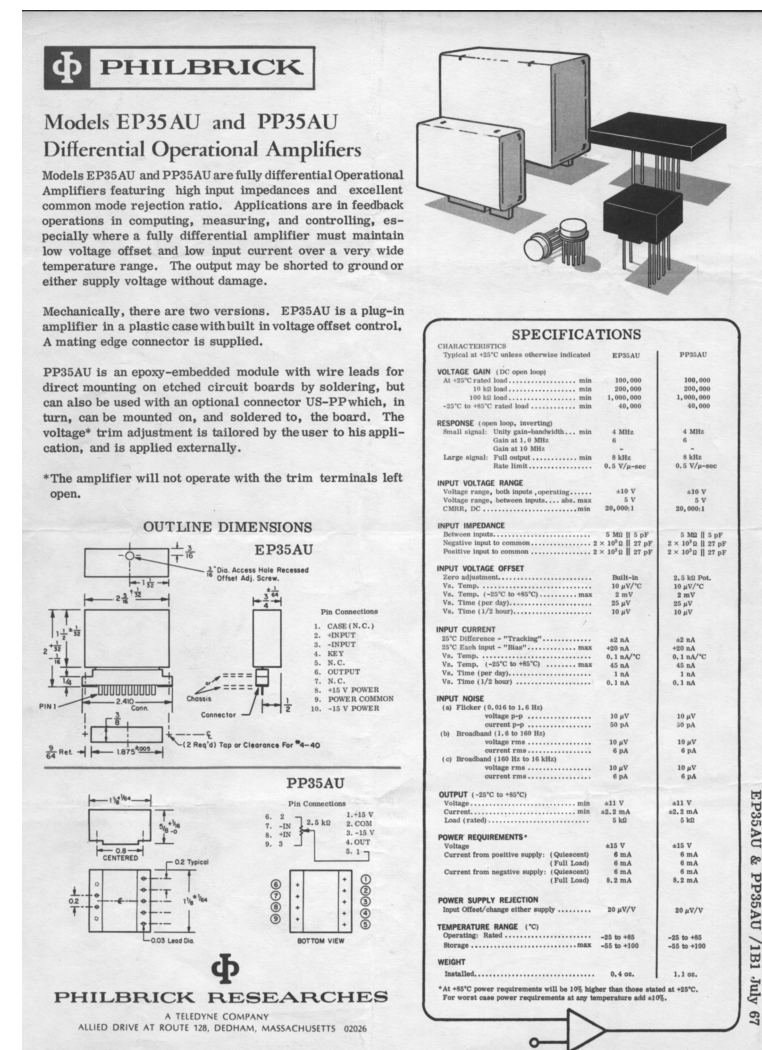
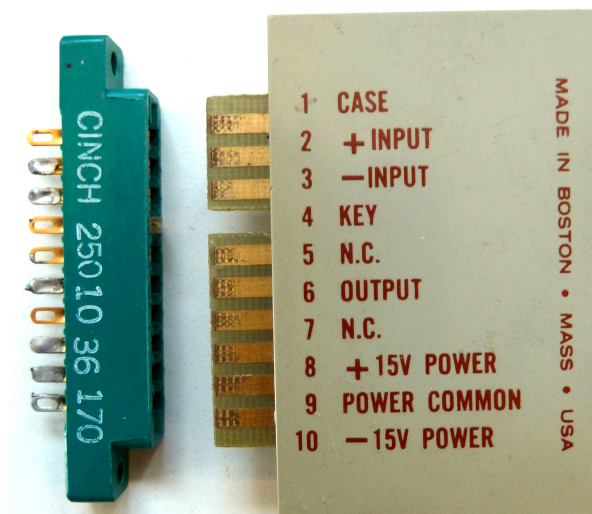
Nowadays:

Just have a look at:

- Analog Devices: Operational Amplifiers
- Texas Instruments: Operational Amplifiers



1967: Philbrick: EP35AU



Operational Amplifier Types

Operational Amplifier Types

1. Voltage feedback operational amplifiers

Symmetrical (balanced) input stage

- a. High CM and DM input impedance
- b. Low equivalent input offset voltage
- c. Can have rail-to-rail input

Operational Amplifier Types

1. Voltage feedback operational amplifiers

Symmetrical (balanced) input stage

- a. High CM and DM input impedance
- b. Low equivalent input offset voltage
- c. Can have rail-to-rail input

2. Current feedback operational amplifiers

Asymmetrical (push-pull) input stage

- a. High input impedance between noninverting input and ground
- b. Low input impedance between inverting input and ground
- c. High output voltage slew rate

Operational Amplifier Types

1. Voltage feedback operational amplifiers

Symmetrical (balanced) input stage

- a. High CM and DM input impedance
- b. Low equivalent input offset voltage
- c. Can have rail-to-rail input

2. Current feedback operational amplifiers

Asymmetrical (push-pull) input stage

- a. High input impedance between noninverting input and ground
- b. Low input impedance between inverting input and ground
- c. High output voltage slew rate

3. Fully differential operational amplifiers

Intended for driving high-frequency, differential-input ADCs

- a. Balanced input and output
- b. Control input for CM output voltage (unity gain)

Operational Amplifier Types

1. Voltage feedback operational amplifiers

Symmetrical (balanced) input stage

- a. High CM and DM input impedance
- b. Low equivalent input offset voltage
- c. Can have rail-to-rail input

2. Current feedback operational amplifiers

Asymmetrical (push-pull) input stage

- a. High input impedance between noninverting input and ground
- b. Low input impedance between inverting input and ground
- c. High output voltage slew rate

3. Fully differential operational amplifiers

Intended for driving high-frequency, differential-input ADCs

- a. Balanced input and output
- b. Control input for CM output voltage (unity gain)

4. Zero-drift operational amplifiers

Complex internal architecture for reduction of input offset

- a. Application of auto-zero techniques (auto-zero amplifiers)
- b. Application of modulation and demodulation techniques (chopper amplifiers)

Operational Amplifier Types

1. Voltage feedback operational amplifiers

Symmetrical (balanced) input stage

- a. High CM and DM input impedance
- b. Low equivalent input offset voltage
- c. Can have rail-to-rail input

2. Current feedback operational amplifiers

Asymmetrical (push-pull) input stage

- a. High input impedance between noninverting input and ground
- b. Low input impedance between inverting input and ground
- c. High output voltage slew rate

3. Fully differential operational amplifiers

Intended for driving high-frequency, differential-input ADCs

- a. Balanced input and output
- b. Control input for CM output voltage (unity gain)

4. Zero-drift operational amplifiers

Complex internal architecture for reduction of input offset

- a. Application of auto-zero techniques (auto-zero amplifiers)
- b. Application of modulation and demodulation techniques (chopper amplifiers)